

BTU Meter with Pulse Output

Third-Party Products

From The Manufacturer of E-Mon D-Mon

Description

The model 5202 electronic calculating unit provides accurate and reliable operation with automatic compensation for water density. A non-resettable LCD indicates flow, temperature and BTU's. The 5202 is equipped with a dry contact pulse output for interfacing with interval data recorders (IDRs). A pair of platinum temperature sensors and sensor wells for mounting the sensors are included.

The 1800 series flow meters are industrial grade, multi-wing, turbine type water meters. They are available in sizes from 3/4" to 10". All register in US gallons, have sealed, non-resettable counters and trickle flow indicators. All are equipped with pulse output to interface with the 5202 calculating unit.

Sizes up to 1 1/2" use union connections. Sizes 2" and larger are designed with standard flanges.



Specifications

5202 Specifications

Temp Range: 23F-356F
Delta T range: 0.225F-333F
Environmental: 14F-158F
LCD: 7 digits
Temp sensors: Platinum RTD
Power Supply: 6 year battery
Pulse Output: open collector
or dry contact

1800 Series Specifications

Max temp: 248F
Max pressure: 232 psi
Accuracy: 1.5%
Counter: Sealed mechanical
Pulse output: Dry contact 1 pulse per
1/10/100 gallons
Body Construction:
Up to 1 1/2": Brass
2" and larger: Cast iron

DISCLAIMER

E-Mon does not manufacture the products described on this page. We do not provide a warranty with respect to products we do not manufacture, and Customer must rely on the representations and warranties, if any, provided by the manufacturer of such product. We reserve the right to make changes to our products or to discontinue any product or service without notice.

BTU Meter with Pulse Output

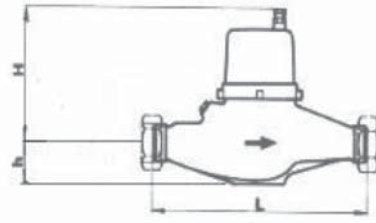
Third-Party Products

From The Manufacturer of E-Mon D-Mon

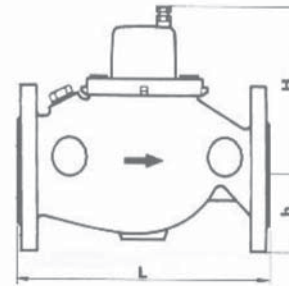
Dimensions

P/N	1800	1805	1810	1811	1815	1816	1820
Size	½"(H) 15mm	¾"(A) 20mm	1"(H) 25mm	1"(D) 25mm	1½"(H) 40mm	1½"(D) 40mm	2"(H) 50mm
h	3/4" 20mm	3/4" 20mm	1-3/4" 45mm	1-1/4" 31mm	2" 50mm	7/8" 21mm	3-1/4" 83mm
H	3-3/4" 95mm	3-3/4" 95mm	5-1/2" 140mm	7-1/2" 191mm	6-1/4" 155mm	8-3/4" 221mm	7-1/8" 180mm
L	4-1/2" 114mm	5" 127mm	10-1/4" 260mm	5-7/8" 150mm	11-7/8" 300mm	7-7/8" 200mm	10-1/2" 270mm
P/N	1825	1830	1835	1840	1845	1850	1855
Size	2"(A) 50mm	3"(A) 80mm	4"(A) 100mm	6"(A) 150mm	8"(A) 200mm	10"(A) 250mm	12"(A) 300mm
h	3" 75mm	3-3/4" 94mm	4-3/8" 110mm	5-3/4" 145mm	6-3/4" 172mm	8" 203mm	9-1/2" 241mm
H	5-1/2" 141mm	5-1/2" 141mm	7-7/8" 200mm	8-1/2" 217mm	8-1/2" 217mm	9-1/4" 240mm	10-1/4" 260mm
L	7-7/8" 200mm	8-7/8" 225mm	9-7/8" 250mm	11-7/8" 300mm	13-3/4" 350mm	17-3/4" 450mm	19-3/4" 502mm

Flow Meter 3/4" to 1 1/2"



Flow Meter 2" to 10"



Flow Range Specifications

P/N		1800	1805	1810	1811	1815	1816	1820
FLOW RANGE	MIN	0.13 gpm	0.22 gpm	0.4 gpm	0.4 gpm	0.7 gpm	0.7 gpm	0.88 gpm
		30 lph	50 lph	90 lph	90 lph	160 lph	160 lph	200 lph
	CONT	6.6 gpm	11 gpm	26.32 gpm	26.32 gpm	43.86 gpm	43.86 gpm	65.8 gpm
		1.5 m ³ ph	2.5 m ³ ph	6 m ³ ph	6 m ³ ph	10 m ³ ph	10 m ³ ph	15 m ³ ph
MAX	13.2 gpm	22 gpm	52.6 gpm	52.6 gpm	87.22 gpm	87.22 gpm	131.6 gpm	
	3 m ³ ph	5 m ³ ph	12 m ³ ph	12 m ³ ph	20 m ³ ph	20 m ³ ph	30 m ³ ph	
PULSE	gal/pulse	1	1	1	1	1	1	10
	liters/pulse	1	1	1	1	1	1	10
WEIGHT	pounds	2.3	2.5	6.4	6.8	11.3	12.1	27.5
	kilograms	1	1.1	2.9	3.1	5.1	5.5	12.5
P/N		1825	1830	1835	1840	1845	1850	1855
FLOW RANGE	MIN	2.64 gpm	14.09 gpm	5.26 gpm	26.32 gpm	43.86 gpm	53 gpm	66 gpm
		0.6 m ³ ph	3.2 m ³ ph	1.2 m ³ ph	6 m ³ ph	10 m ³ ph	12 m ³ ph	15 m ³ ph
	CONT	66.04 gpm	140.89 gpm	263.2 gpm	657.9 gpm	1096.5 gpm	1761 gpm	2642 gpm
		15 m ³ ph	32 m ³ ph	60 m ³ ph	150 m ³ ph	250 m ³ ph	400 m ³ ph	600 m ³ ph
MAX	264.2 gpm	396.26 gpm	790 gpm	1535 gpm	2631 gpm	4400 gpm	5284 gpm	
	60 m ³ ph	90 m ³ ph	180 m ³ ph	350 m ³ ph	600 m ³ ph	1000 m ³ ph	1200 m ³ ph	
PULSE	gal/pulse	10	10	10	100	100	100	100
	liters/pulse	10	10	10	100	100	100	100
WEIGHT	pounds	24.4	27.5	43.7	71.6	99.2	260.0	300.0
	kilograms	11.1	12.5	19.8	32.5	45	118	136

DISCLAIMER

E-Mon does not manufacture the products described on this page. We do not provide a warranty with respect to products we do not manufacture, and Customer must rely on the representations and warranties, if any, provided by the manufacturer of such product. We reserve the right to make changes to our products or to discontinue any product or service without notice.

