

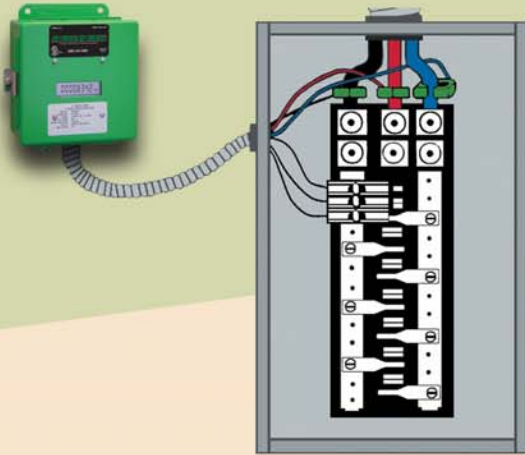
E-Mon Green Class Meter

Ideal for New or Retrofit Installations!

The Green Class meter provides a variety of features including scrolling display of:

- Kilowatt hour usage
- KWH usage in dollars
- Current load in kilowatts
- Cost per hour based on current load
- CO₂ emissions in lbs.
- Hourly CO₂ emissions
- Optional Net Metering information including delivered, received and net usage

E-Mon's unique split-core current sensors allow for easy installation that requires no expensive rewiring or power interruption.



The meters are compatible with E-Mon Energy software and building automation systems to chart energy usage, evaluate the impact of load shedding and energy saving programs, identify energy savings opportunities and generate itemized bills for tenant allocation, departmental allocation and usage measurement & verification.

E-Mon is a proud member and has worked closely with the following organizations:



ALLIANCE TO
SAVE ENERGY

E-Mon®

Energy Monitoring Products

One Oxford Valley, Suite 418

Langhorne, PA 19047

(800) 334-3666

www.emon.com

E-Mon D-Mon®

Energy Monitoring Products & Systems

Cost-Effective Electric Metering Solutions For Green Building Initiatives



Green Class Electric Meters

As more and more facilities strive to increase energy efficiency, property managers are turning to submetering to assist in their green building efforts.



To support these efforts, E-Mon offers its Green Class meters. E-Mon D-Mon Green Class meters offer environmentally conscious energy users the key to a successful green building initiative or program compliance:

- LEED Certification
- EPACT 2005
- Renewable Energy Projects
- Net Metering
- Demand Response
- Measurement & Verification
- Energy Efficiency Status

Make E-Mon D-Mon Green Class meters part of your green building. Whether displayed in lobbies, tenant spaces or electrical rooms, the Green Class E-Mon D-Mon gets everyone involved in saving energy.

LEED Certification

E-Mon can assist with LEED certification points in several areas including metering & verification, fundamental commissioning, On-site renewable energy, green power and regional material in addition to the specific points for metering outlined below.

Core & Shell

EA Credit 5.1 (1 Point)
EA Credit 5.2 (1 Point)

Measurement & Verification- Base Building
Measurement & Verification- Tenant Submetering

Existing Buildings

EA Credit 3.1 (1 Point)
EA Credit 3.3 (1 Point)
EA 5.1-5.3 (1-3 Points)
EA Credit 6 (1 Point)

Building Operations & Maintenance: Staff Education
Building Operations & Maintenance
Performance Measurement: Enhanced Metering
Documenting Sustainable Building Cost

New Construction

EA Prerequisite 2
EA Credit 5 (1 Point)

Minimum Energy Performance
Measurement & Verification

Commercial Interiors

EA Credit 1 (1 Point)
EA Credit 3 (2 Points)

Optimize Energy Performance
Energy Use, Measurement & Payment Accountability

EPACT 2005/EISA 2007 Compliance

The EPACT 2005 and EISA 2007 contain several requirements that are supported by E-Mon's Green Class meters. These include:

Section 103
Section 1251
Section 1331
Title IV, Sec. 434

All Federal buildings must be metered by 2012
Net Metering
Support for \$1.80 Federal tax deduction
Provide equivalent metering of gas & steam by 2016

Let us help assist in designing your green metering program. Call (800) 334-3666 or visit www.emon.com/green.asp