

H4300 Hot Water Meter Sizes 2", 3", 4" and 6"

Third-Party Products

From The Manufacturer of E-Mon D-Mon



Model Numbers

Model	Size
H43002	2"
H43003	3"
H43004	4"
H43006	6"

Note: Meters supplied as indoor version with pulse output.

Specifications

Description

Operation . The H4300 (formerly WPH) is a Woltman horizontal impeller (inferential) meter. The impeller and magnet are the only moving parts in the measuring chamber. The impeller movement is transferred by a magnetic coupling to an evacuated and hermetically sealed register, which can be read in any of four cardinal points without breaking the calibration seal.

Installation . The meter must be installed in a clean pipeline, free from foreign materials. The meter shall be installed with the direction of flow as indicated by the arrow cast into the meter case. The meter may be installed in a horizontal or inclined line up to 45° with the register facing upward. Note: The meter must have 10 pipe diameters ahead of the unit and 5 after, of straight pipe, to insure proper flow through the meter.

Applications . The meter is for use with hot water up to 250°F (120°C) and working pressure to 230 psi (16 bar). Both pressure loss and accuracy tests are made before shipment. No adjustments need be made before installation.

Construction . The meter consists of the main case, a measuring chamber, an impeller, a removable top plate and o-ring with a magnetically driven register or register pulser assembly and register or register pulser housing (polymer).

Register . The register is a dust and waterproof, hermetically sealed unit, to prevent condensation caused by variation of temperature. The register can be positioned in any of four cardinal points without breaking the calibration seal.

	2"	3"	4"	6"
Min Flow GPM ± 5%	4.4	8.8	10.5	17.6
Low Flow GPM ± 3%	8.8	17.6	26.4	88.0
Rec Cont Flow ± 1%	153	330	550	940
Peak Flow GPM ± 1%	305	660	1100	1870
Pressure Loss psi Low	.014	.014	.014	.014
Pressure Loss psi Cont	.182	.435	.725	1.45
Pressure Loss psi Peak	1.45	1.45	1.45	1.45
Operating Pressure psi	230	230	230	230
Operating Temperature °F	250	250	250	250

Register Reading Smallest Qty:

US Gallons	1 Gal	1 Gal	1 Gal	1 Gal
Cubic Meters	1 Ltr	1 Ltr	1 Ltr	1 Ltr

Capacity of Register/Pulser:

US Gallons (millions)	100	100	100	1000
Cubic Meters (millions)	1	1	1	10

Contact Closure/Pulser:

Reed Switch	1 cont/	1 cont/	1 cont/	1 cont/
US Gallon	10 gal	10 gal	10 gal	100 gal

Opto-Electro	1 cont/	1 cont/	1 cont/	1 cont/
US Gallon	1 gal	1 gal	1 gal	10 gal

Reed Switch	1 cont/	1 cont/	1 cont/	1 cont/
Cubic Meter	100 ltr	100 ltr	100 ltr	1000 ltr

Opto-Electro	1 cont/	1 cont/	1 cont/	1 cont/
Cubic Meter	1 ltr	1 ltr	1 ltr	10 ltr

Materials:

Body Case	Grey Cast Iron
Top Plate	Grey Cast Iron
O-Ring	Ethylene-Propylene (EPDN)
Impellor	2" Carbon Fibre Loaded Nylon 12 3-4" Polyether Ether Keton (PEEK)
Magnet	Rare Earth (Cobalt)
Register	Makrolon (PC)
Register Housing Lid	Makrolon (PC)

DISCLAIMER

E-Mon does not manufacture the products described on this page. We do not provide a warranty with respect to products we do not manufacture, and Customer must rely on the representations and warranties, if any, provided by the manufacturer of such product. We reserve the right to make changes to our products or to discontinue any product or service without notice.

(800) 334-3666 - www.emon.com

Effective Date: 6/1/2007

E-Mon
Energy Monitoring Products

H4300 Hot Water Meter Sizes 2", 3", 4" and 6"

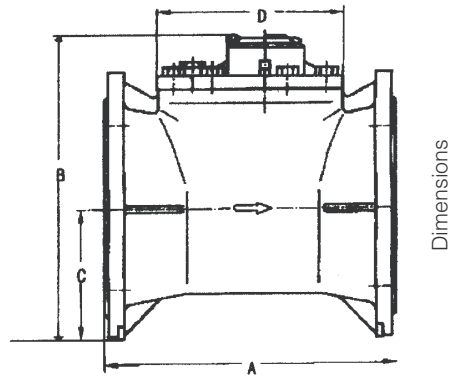
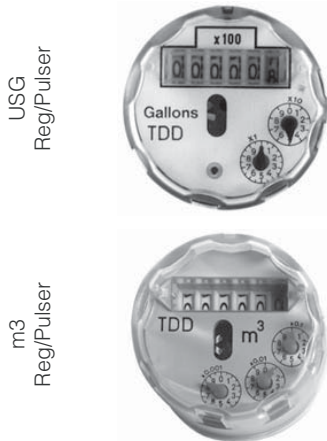
Third-Party Products From The Manufacturer of E-Mon D-Mon

Pulsar Reed Switch (2-wire) — The pulse element is a dry contact Reed Switch, rated at 10 watts. Contact load capacity of the Reed Switch is 24VDC, 100 mA. Requires power from an external source.

Opto-Electronic Pulse Transmitter (3-wire) — Contact load capacity of the Transmitter is 24VDC, 100 mA, 15 ohm line resistance core. Diode current source 25 mA. Requires power from an external source.

Dimensions and Net Weights

Meter Size	Dimensions (inches)				Weight Approx. (lbs)
	A Length	B Height	C Center To Bottom	D Width	
2"	7.87"	10.59"	2.95"	7.87"	33
3"	8.85"	11.25"	3.62"	7.87"	42
4"	9.84"	12.28"	4.64"	8.85"	51
6"	11.81"	13.97"	5.60"	11.81"	88

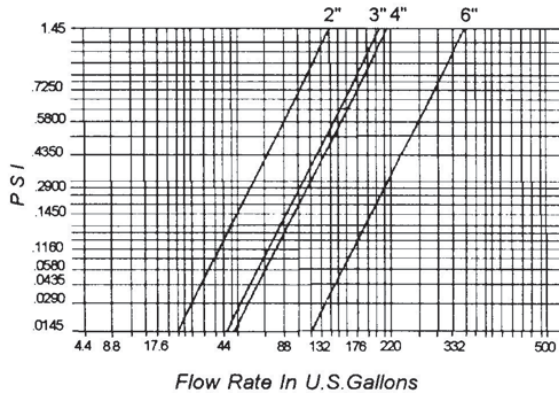


NOTE: Flanges are ANSI Class 150 raised face flanges.
Bolt Pattern: 2" & 3" - 4 holes, 4" & 6" - 8 holes.

Temperature / Pressure Rating

Temp	-20	-150	200	225	250
Min PSIG	--	--	6	25	45

"Min PSIG" is the minimum pressure required to prevent flashing in the meter body.



DISCLAIMER

E-Mon does not manufacture the products described on this page. We do not provide a warranty with respect to products we do not manufacture, and Customer must rely on the representations and warranties, if any, provided by the manufacturer of such product. We reserve the right to make changes to our products or to discontinue any product or service without notice.