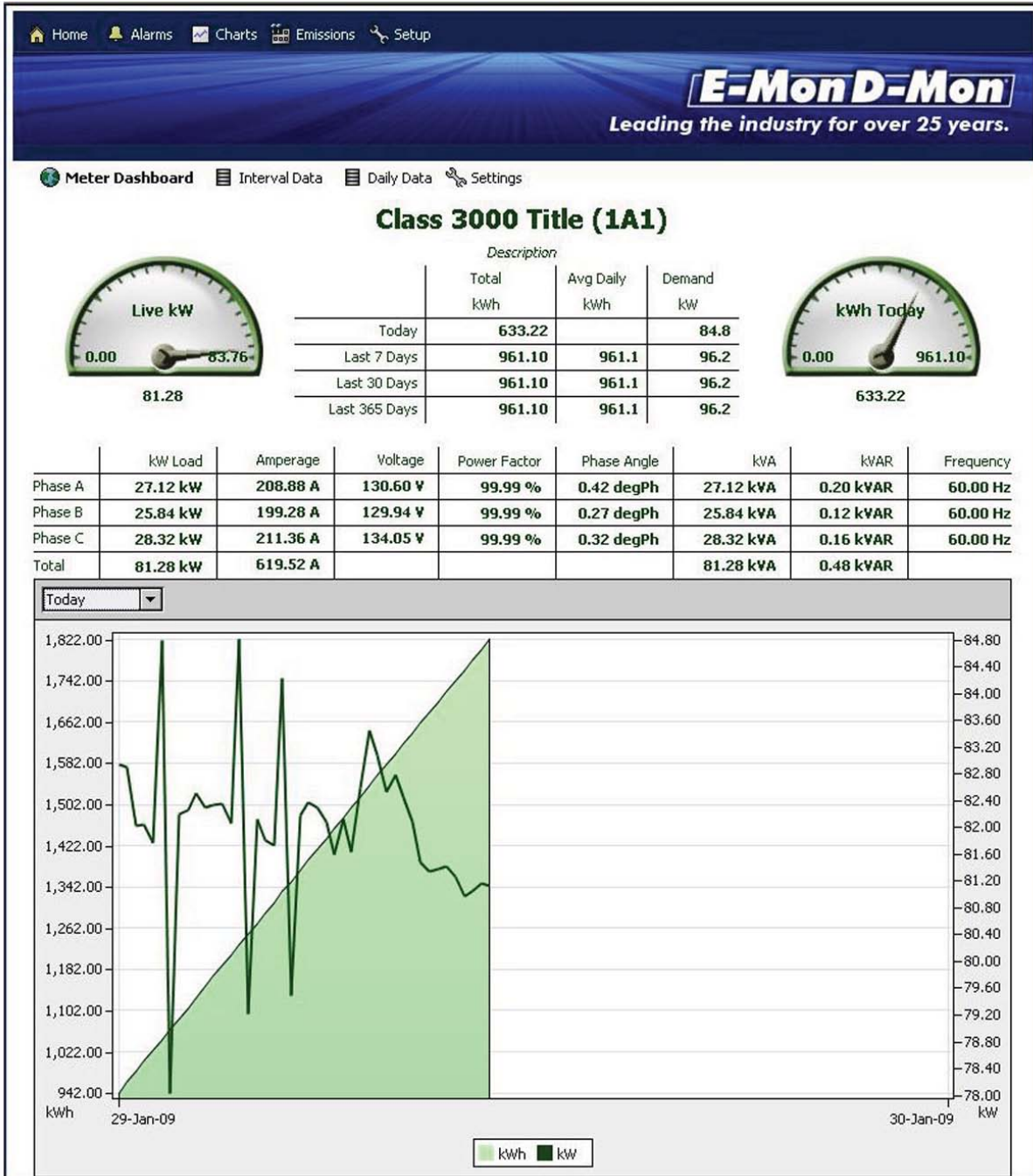


Meter Dashboard



Carbon Footprint Dashboard

Home Alarms Charts Emissions Setup

E-Mon D-Mon
Leading the industry for over 25 years.

634.57 kWh Today



869.36 Lbs Co2

Absorbing 869.36 lbs Co2 requires:

34.77 trees per year.

0.15 acres of forest per year.

Emitting 869.36 lbs Co2 is the equivalent

Burning 44.44 gallons of gas.

Driving 888.74 miles.

Last 7 Days 961.10 kWh

1316.71 Lbs Co2

Carbon Dioxide

4.04 Lbs NOx

Nitrogen Oxide

0.01 Lbs SO2

Sulfur Dioxide

Absorbing 1316.71 lbs Co2 require

52.67 trees per year.

0.22 acres of forest per year.

Emitting 1316.71 lbs Co2 is the equivalent

Burning 67.30 gallons of gas.

Driving 1346.05 miles.

Last 30 Days 961.10 kWh

1316.71 Lbs Co2

Carbon Dioxide

4.04 Lbs NOx

Nitrogen Oxide

0.01 Lbs SO2

Sulfur Dioxide

Absorbing 1316.71 lbs Co2 require

52.67 trees per year.

0.22 acres of forest per year.

Emitting 1316.71 lbs Co2 is the equivalent

Burning 67.30 gallons of gas.

Driving 1346.05 miles.

Last 365 Days 961.10 kWh

1316.71 Lbs Co2

Carbon Dioxide

4.04 Lbs NOx

Nitrogen Oxide

0.01 Lbs SO2

Sulfur Dioxide

Absorbing 1316.71 lbs Co2 require

52.67 trees per year.

0.22 acres of forest per year.

Emitting 1316.71 lbs Co2 is the equivalent

Burning 67.30 gallons of gas.

Driving 1346.05 miles.

Max values on dials represent max recorded values.