

# E-Mon/Niagara<sup>AX</sup> Interface Driver Third-Party Products

for Class 1000, 2000, 3200, 3400, 5000 & IDRs

From The Manufacturer of E-Mon D-Mon

## Description

The Niagara interface driver allows users to integrate E-Mon D-Mon meter information to the Niagara framework without purchasing a separate Modbus<sup>®</sup> driver.

Features include:

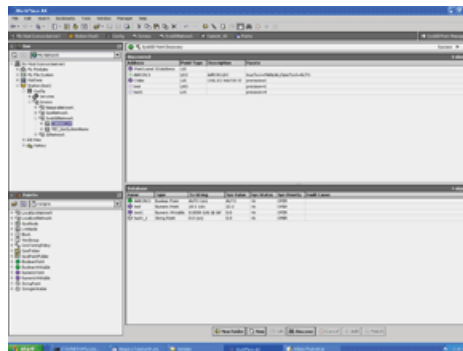
- Built on Niagara Framework™
- Full support of all Open Protocols
- Ease of Use - Built-In Network Discovery
- Device level serial and/or IP connections are supported

The ease of use of these features saves a tremendous amount of engineering hours on jobs where time is money.

The Niagara interface driver allows the user to integrate directly to E-Mon D-Mon Class 3200, 3400, 5000 and IDRs which provides access to Class 1000 & 2000 meters. This software will function on all Niagara 3.n.nnn platforms.

For Class 3200, Class 3400 and Class 5000 meters, all energy points can be discovered and added to a Niagara application. For IDR integration, only kW and kWh points can be discovered and added.

The features of this driver including ease of use, through built-in discovery and web enablement of legacy/proprietary systems makes this driver a perfect fit to bring your system into the 21st century.



Workbench view of Niagara - automatic network discovery of objects using the E-Mon/Niagara interface

**Model Number**

Niagara Interface Driver

#### DISCLAIMER

E-Mon does not manufacture the products described on this page. We do not provide a warranty with respect to products we do not manufacture, and Customer must rely on the representations and warranties, if any, provided by the manufacturer of such product. We reserve the right to make changes to our products or to discontinue any product or service without notice.